

V-LINE® Injection Molding Machine for  
Medium Sized High-Value Added Products

# TR300EH3

*Precise and stable molding by the V-LINE® and  
direct pressure mold clamping further increased the  
high-value added to medium and large-sized molded products*

## V-LINE® Electric Hybrid

The features of the medium sized electric hybrid machine are the integrated V-LINE® and direct pressure mold clamping developed in-house, which realizes high precision and stable molding with accurate and high repeatability.

## Wide Platens

Adopted wide platens where the internal area of the tie bars is 30% more than a conventional machine. The widened space between the tie bars where the mold is inserted supports a larger size of the molding.

## Space-saving & Energy-saving Design

The V-LINE® and direct pressure mold clamping allows the setting of the width and length of the molding machine to a smaller size, which greatly reduces the space occupied by the molding machine. The highly efficient servo pump also improves the energy-saving performance.



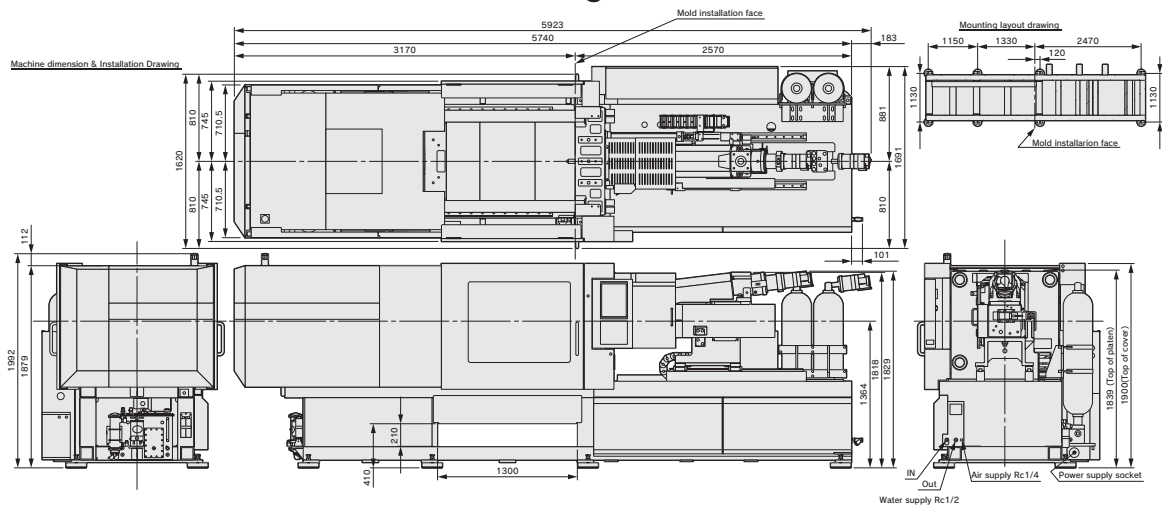
# TR300EH3

## Spec.

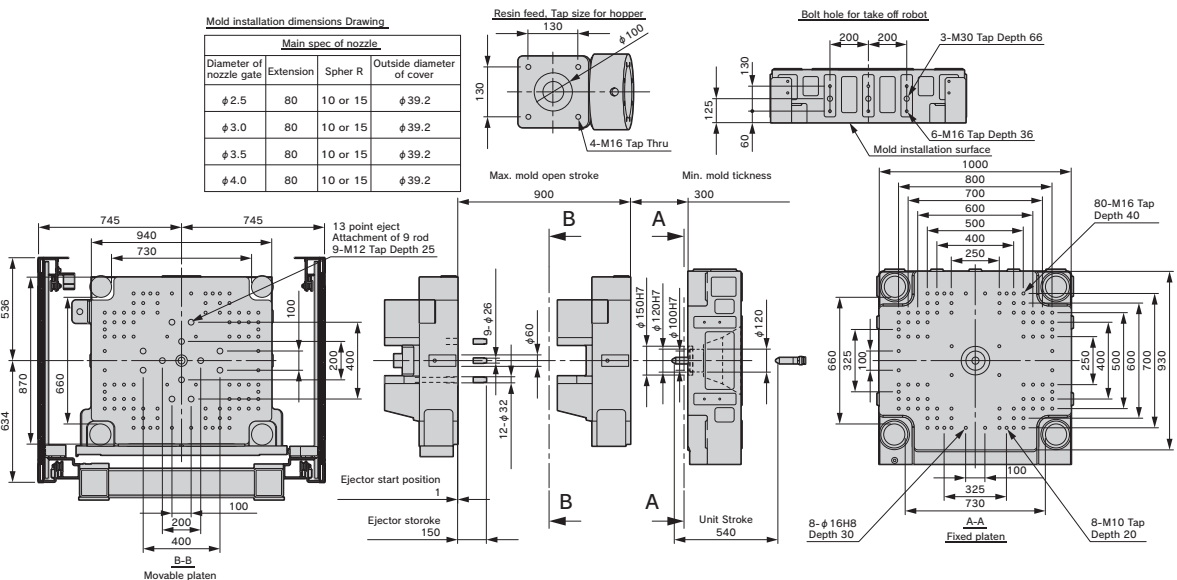
Clamping Unit		
Max. clamping force	kN	2940
Tie bar distance	mm	730 × 660
Open daylight (Min. mold thickness + Max. stroke)	mm	1200
Min./Max. mold thickness	mm	300 / 700
Ejector stroke l	mm	150

Plasticization & injection unit			
Screw diameter	mm	50	50L
Plunger diameter	mm	50	60
Max. injection pressure	MPa	219.5	166.6
Theoretical injection volume	cm <sup>3</sup>	392	621
Injection rate	cm <sup>3</sup> /s	589	847
Max. injection speed	mm/s	300	
Machine dimensions / Weight			
Machine dimensions (L x W x H)	mm	5841 x 1691 x 1992	5923 x 1691 x 1992
Machine weight	kg	10500	

## Machine Dimensions & Installation Drawing



## Mold Installation Dimensions Drawing



Unit: mm

Unit: mm

## Sodick Co., Ltd.

3-12-1, Nakamachidai, Tsuzuki-ku, Yokohama, Kanagawa

224-8522 Japan

TEL: 81-45-942-3111 FAX: 81-45-943-7880

<http://www.sodick.jp>

● The export of Sodick's products and its related technologies (including software applications) is regulated under Japan's Foreign Exchange and Foreign Trade Control Law. In addition, because some of these products may be subject to re-export controls under the Export Administration Regulations (EAR) of the United States; please contact Sodick before offering or exporting these products overseas.

● This catalogue contains a photographic image that has been generated from 3DCG.

● Due to ongoing research, specifications are subject to change without prior notice.

● The contents of this catalog is current as of December, 2015.