

eV-LINE Electric Injection Molding Machine

MS100

*Based on high accuracy and stable molding by V-LINE[®],
Developed "eV - LINE" compatible electric motor and a new mold clamping mechanism,
Improvement of productivity and energy saving by high cycle*

Electric V-LINE[®]

The injection and plasticizing apparatus using the V-LINE[®] system, with characteristics that ensure precise reproducibility, is now powered by a servomotor. Measurements and positioning data for the injection locations are controlled in a closed loop to improve the precision of positioning, achieving remarkably stable repetitions of the plasticizing, measuring, and injection cycle. The line of injection units with plungers of 28 mm and 40 mm in diameters include models that emphasize speed and models that emphasize pressure, allowing you to choose the unit that best suits the molded product type.

Electric clamping action

With the servo motor drive and adoption of the mold clamping device by the original toggle link mechanism shortened the mold opening and closing cycle. The movable platen is supported by a linear guide to improve the stability of the mold orientation. The power design for these products significantly reduces power usage while contributing to quieter operation.

Operation panel focused on intuition

Offering selector type switches, the control panel has been developed especially for the MS100. The ability to move the switches in the same direction in which you want each unit to move results in a more intuitive operating experience and helps simplify molding operations.



MS100

Spec.

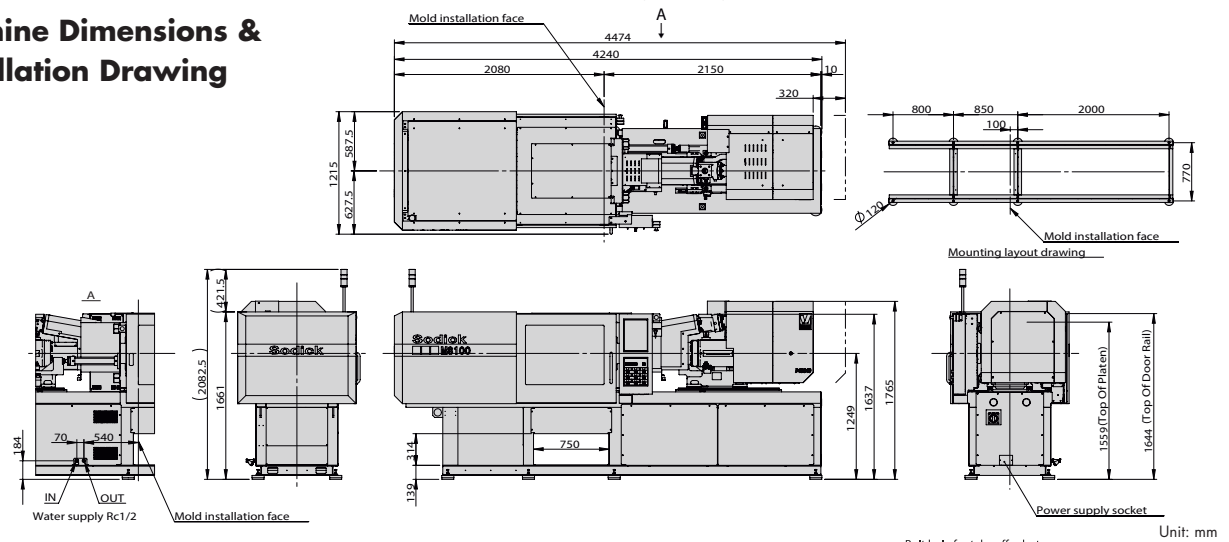
Clamping Unit		
Maximum clamping force	kN	980
Tie bar distance (W x L)	mm	460 x 420
Open daylight	mm	800
Min./Max. mold thickness	mm	200 / 450

Plasticization & Injection Unit					
Screw diameter	mm	28	32	40	40
Plunger diameter	mm	28		40	
Theoretical injection volume	cm ³	98.5		251.3	
Max. injection speed	mm/s	400	300	270	200
Max. injection pressure ^{*1, *2}	MPa	215	285	160	215
Max. holding pressure ^{*1, *2}	MPa	172	228	128	172

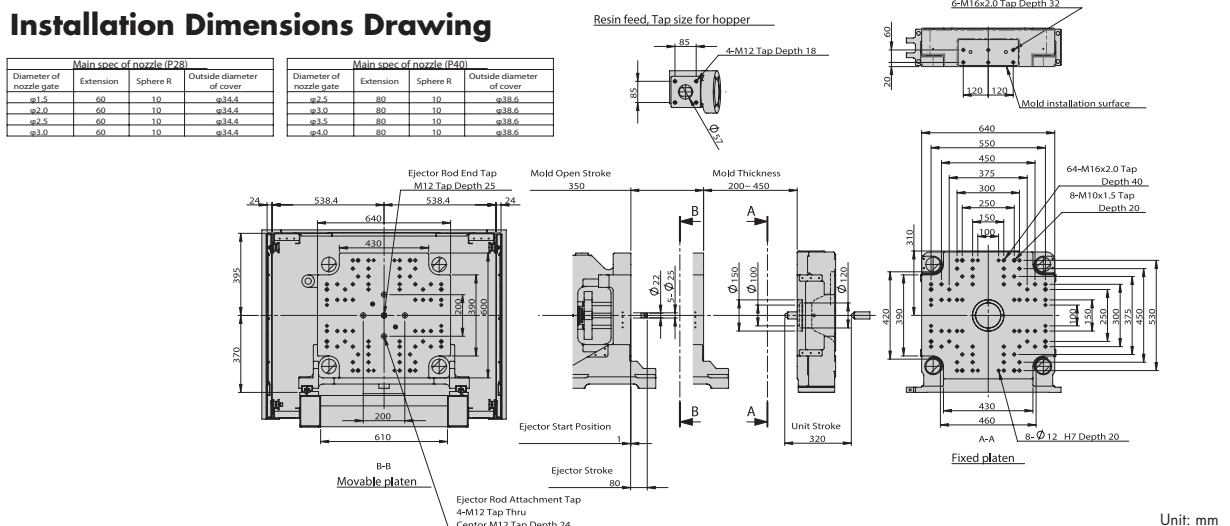
Machine dimensions / Weight				
Machine dimensions (LxWxH) mm	mm	4240x1215x1688	4240x1215x1748	4474x1215x1765
Machine weight	kg	4000	4100	4300

*1: Maximum injection pressure and maximum holding pressure are calculated output values for injection units. Actual resin pressure does not necessarily reflect these values.
 *2: Due to injection motor duty cycles, the maximum injection pressure and maximum holding pressure may not be achievable when repeated in rapid succession.

Machine Dimensions & Installation Drawing



Mold Installation Dimensions Drawing



Sodick Co., Ltd.

3-12-1, Nakamachidai, Tsuzuki-ku, Yokohama, Kanagawa
 224-8522 Japan
 TEL: 81-45-942-3111 FAX: 81-45-943-7880

<http://www.sodick.jp>

- The export of Sodick's products and its related technologies (including software applications) is regulated under Japan's Foreign Exchange and Foreign Trade Control Law. In addition, because some of these products may be subject to re-export controls under the Export Administration Regulations (EAR) of the United States; please contact Sodick before offering or exporting these products overseas.
- This catalogue contains a photographic image that has been generated from 3DCG.
- Due to ongoing research, specifications are subject to change without prior notice.
- The contents of this catalog is current as of August, 2017.