

Manufacturing Cell System for eV-LINE OPM Molds

MR30

High productivity is achieved through a peripheral device package and 3D cooling pipes built into injection molds.

OPM Mold Dedicated Machine

This is an electric type cell production system only for OPM molds which supports various types of small lot production, integrated with built-in 3D cooling pipes molded with a precision metal 3D printer. The system is standardly equipped with two temperature controllers, which enables ideal local temperature control by two line mold temperature control piping. The cooling effect during molding is demonstrated to the utmost which drastically reduces the molding cycle, minimizes deformation and improves the yield.

All-in-One

The adoption of a unique cassette molding structure equipped with an OPM mold overwhelmingly reduces the mold replacement time. This all-in-one and compact system is structured with the functions required for molding and sufficient peripheral device capabilities, which minimized the equipment area required for molding.

Centralized Control

Just one operation panel provides an operation environment with excellent usability which sends commands to control the overall system, including the peripheral devices. Performing central control by acquiring the molding data and data related to the peripheral devices into the latest controller developed in-house, enhances the IoT functions including smart control and labor savings, and promotes global applications.



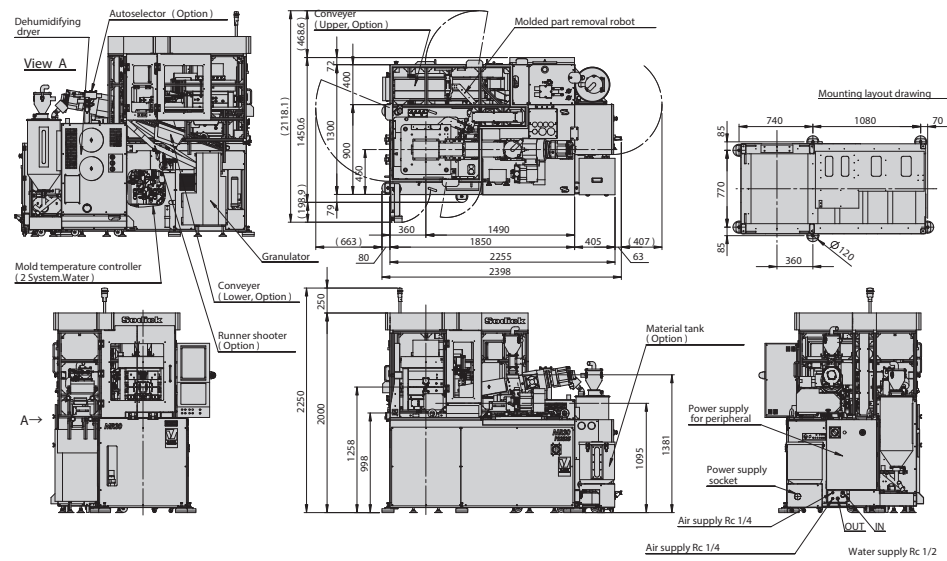
MR30

Spec.

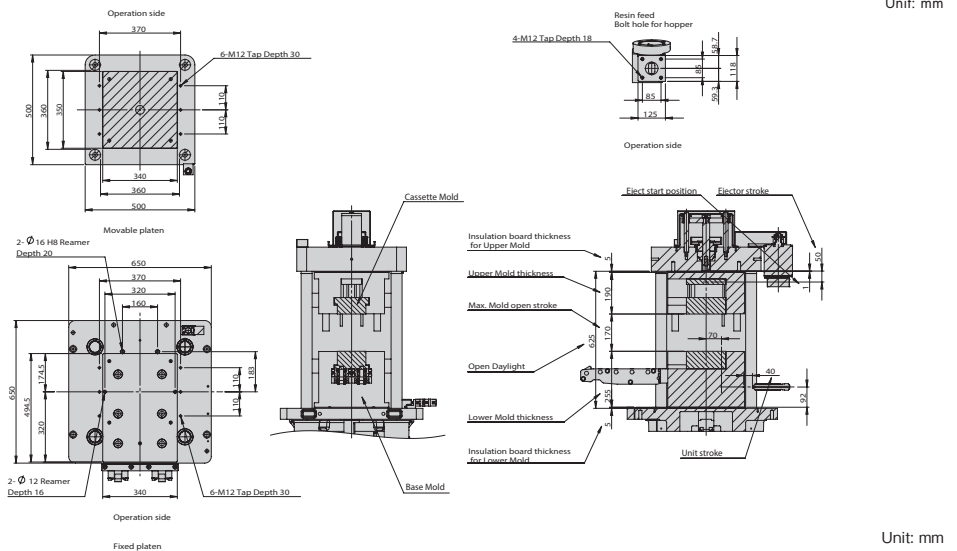
Clamping Unit		
Max. clamping force	kN	294
Tie bar distance	mm	360 × 360
Open daylight (Mold thickness + stroke)	mm	625
Mold thickness	mm	455
Ejector stroke	mm	50

Plasticization & Injection Unit		
Screw diameter	mm	25
Plunger diameter	mm	22
Max. injection pressure	MPa	180
Theoretical injection volume	cm ³	27
Max. injection speed	mm/s	150
Plasticating capacity	kg/h	15
Machine dimensions / Weight		
Machine dimensions (L x W x H)	mm	2398 × 1451 × 2250
Machine weight	kg	2000

Machine Dimensions & Installation Drawing



Mold Installation Dimensions Drawing



Sodick Co., Ltd.

3-12-1, Nakamachidai, Tsuzuki-ku, Yokohama, Kanagawa
224-8522 Japan
TEL: 81-45-942-3111 FAX: 81-45-943-7880

<http://www.sodick.jp>

- The export of Sodick's products and its related technologies (including software applications) is regulated under Japan's Foreign Exchange and Foreign Trade Control Law. In addition, because some of these products may be subject to re-export controls under the Export Administration Regulations (EAR) of the United States; please contact Sodick before offering or exporting these products overseas.
- This catalogue contains a photographic image that has been generated from 3DCG.
- Due to ongoing research, specifications are subject to change without prior notice.
- The contents of this catalog is current as of June, 2017.