

V-LINE® Injection Molding Machine for High Value-Added Products

GL30

V-LINE®'s global standard model contributes to high value-added molding in extensive fields, including precision, electronics, optics and medical equipments.

Excellent Plasticization & Injection Performance

Equipped with a highly stable and highly reliable plasticization and injection unit realized by Sodick's original V-LINE® which contributes to accurate and highly repeatable resin injection, and a hydraulic accumulator mechanism that enables high speed injection with dynamic responsiveness at a high level.

Original Mold Open/Close & Clamping Mechanism

Adopts both a mold open/close mechanism which realizes accurate position control by an electronic system, and a mold clamping mechanism that reproduces an accurate mold clamping force by a hydraulic system. Equipped with a direct pressure mold clamping system which utilizes the merits of the electro-hydraulic hybrid system to the utmost.

Total Servo Drive

Further improved energy saving performance by the use of an electric servo motor for the hydraulic pump drive, in addition to the electric servo motor drive for the mold open/close mechanism and ejection mechanism.



GL30

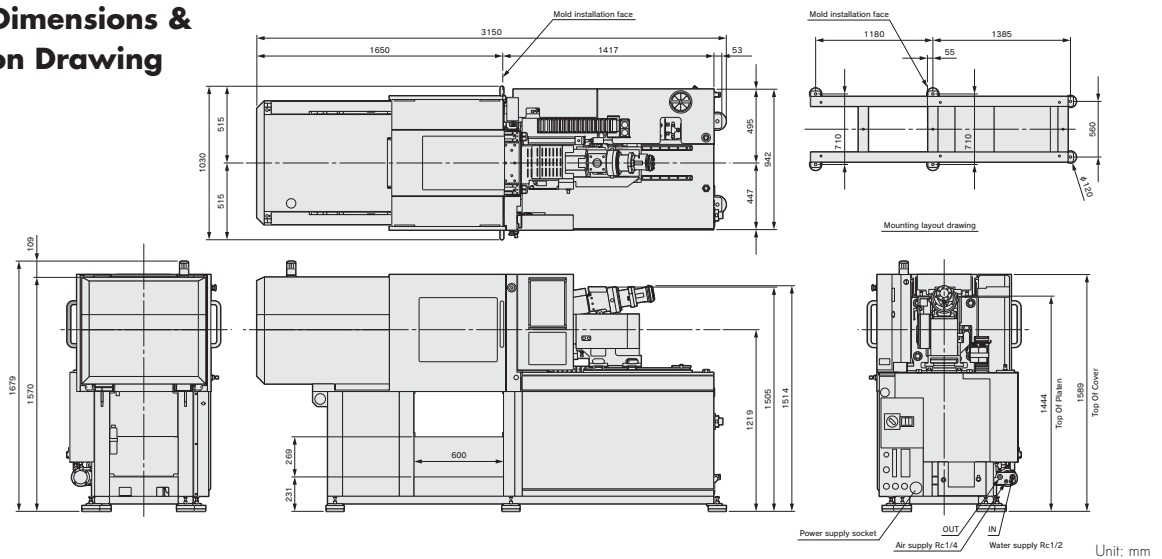
Spec.

Clamping Unit		
Max. clamping force	kN	294 [392] *1
Tie bar distance (WxL)	mm	310 × 310
Open daylight (Min. mold thickness + Max. stroke)	mm	550
Min./Max. mold thickness	mm	150 / 360
Ejector stroke	mm	50

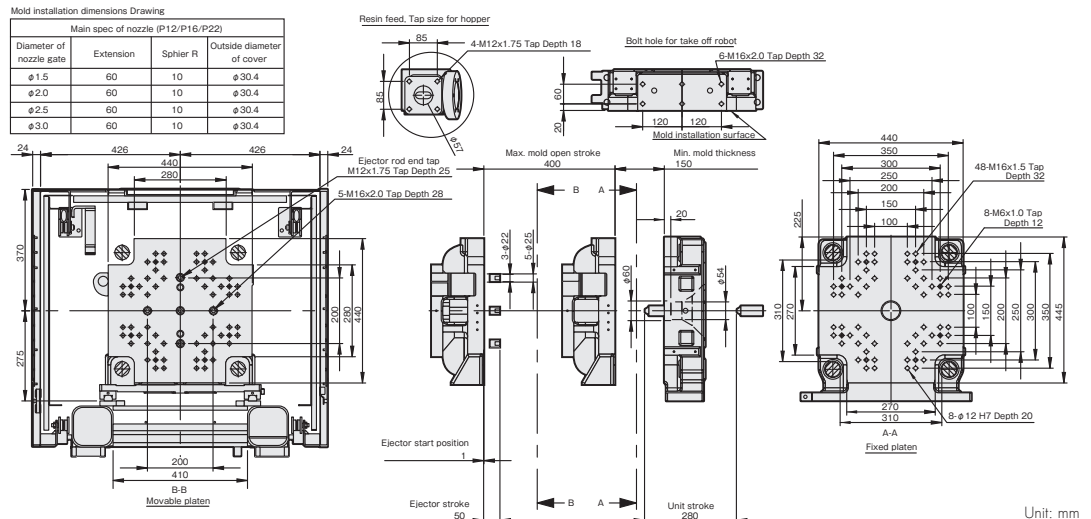
* 1 Max clamping force "392 kN" is optional specification.

Plasticization & Injection Unit				
Screw diameter	mm	14	18	22
Plunger diameter	mm	12	16	22
Max. injection pressure	MPa	288	262	260
Theoretical injection volume	cm ³	4.5	14	27
Max. injection speed	mm/s	500	500	500
Plasticating capacity	kg/h	4	7	10.5
Machine dimensions / Weight				
Machine dimensions (L x W x H)	mm	3150×1030×1679		
Machine weight	kg	2000		

Machine Dimensions & Installation Drawing



Mold Installation Dimensions Drawing



Sodick Co., Ltd.

3-12-1, Nakamachidai, Tsuzuki-ku, Yokohama, Kanagawa

224-8522 Japan

TEL: 81-45-942-3111 FAX: 81-45-943-7880

<http://www.sodick.jp>

- The export of Sodick's products and its related technologies (including software applications) is regulated under Japan's Foreign Exchange and Foreign Trade Control Law. In addition, because some of these products may be subject to re-export controls under the Export Administration Regulations (EAR) of the United States; please contact Sodick before offering or exporting these products overseas.
- This catalogue contains a photographic image that has been generated from 3DCG.
- Due to ongoing research, specifications are subject to change without prior notice.
- The contents of this catalog is current as of September, 2015.