

V-LINE® Injection Molding Machine for High Value-Added Products

# GL100

*V-LINE®'s global standard model contributes to high value-added molding in extensive fields, including precision, electronics, optics and medical equipments.*

## Excellent Plasticization & Injection Performance

Equipped with a highly stable and highly reliable plasticization and injection unit realized by Sodick's original V-LINE® which contributes to accurate and highly repeatable resin injection, and a hydraulic accumulator mechanism that enables high speed injection with dynamic responsiveness at a high level.

## Original Mold Open/Close & Clamping Mechanism

Adopts both a mold open/close mechanism which realizes accurate position control by an electronic system, and a mold clamping mechanism that reproduces an accurate mold clamping force by a hydraulic system. Equipped with a direct pressure mold clamping system which utilizes the merits of the electro-hydraulic hybrid system to the utmost.

## Total Servo Drive

Further improved energy saving performance by the use of an electric servo motor for the hydraulic pump drive, in addition to the electric servo motor drive for the mold open/close mechanism and ejection mechanism.



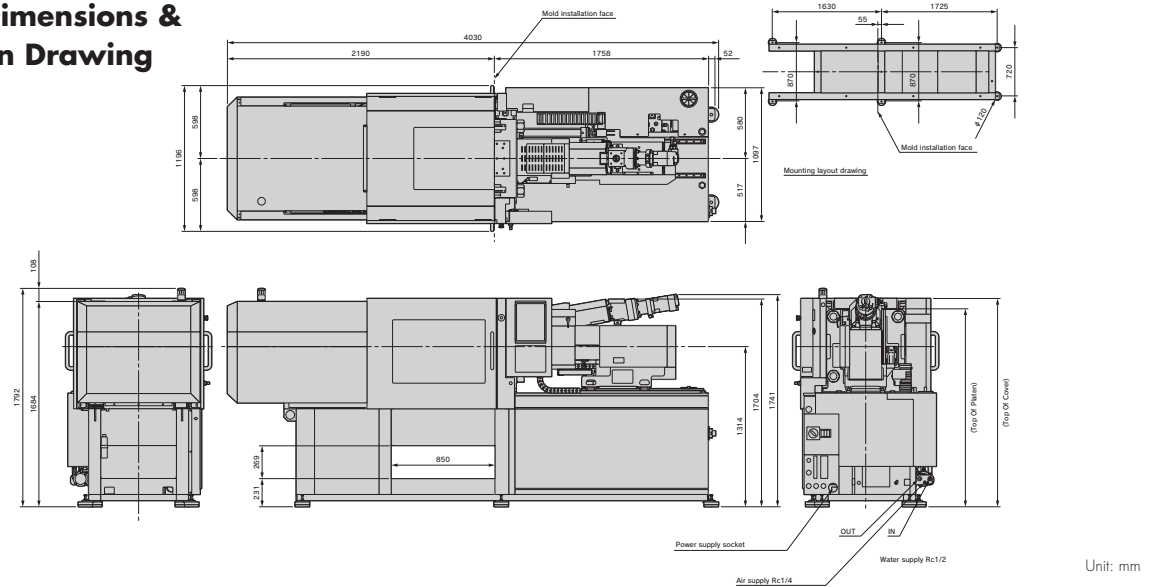
# GL100

## Spec.

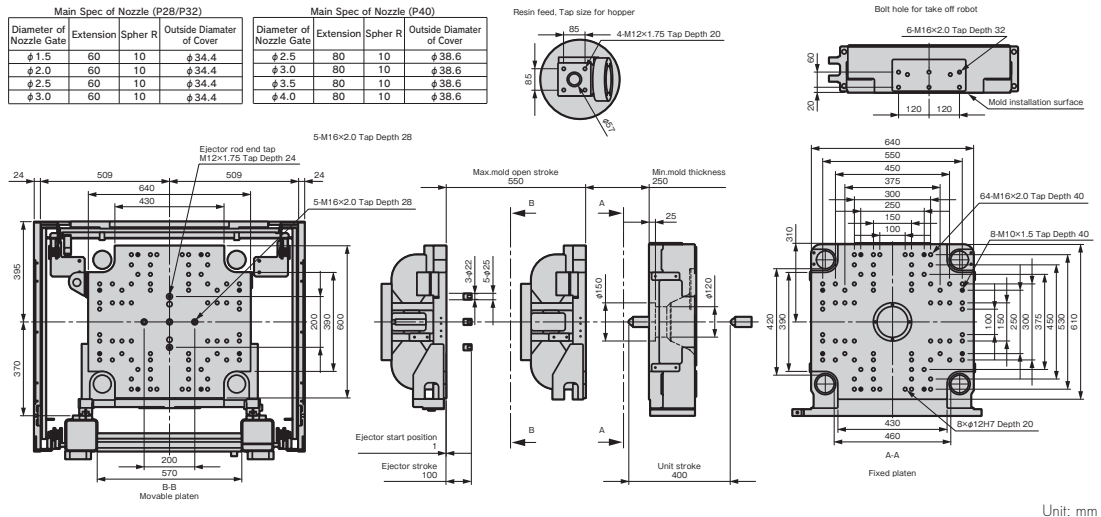
Clamping Unit		
Max. clamping force	kN	980
Tie bar distance (WxL)	mm	460 x 420
Open daylight (Min. mold thickness + Max. stroke)	mm	800
Min./Max. mold thickness	mm	250 / 550
Ejector stroke	mm	100

Plasticization & Injection Unit				
Screw diameter	mm	28	32	40
Plunger diameter	mm	28	32	40
Max. injection pressure	MPa	240	220	210
Theoretical injection volume	cm <sup>3</sup>	83	108	251
Max. injection speed	mm/s	500	400	300
Plasticating capacity	kg/h	30	40	44
Machine dimensions / Weight				
Machine dimensions (L x W x H)	mm	4030x1196x1792		
Machine weight	kg	3100	3300	

## Machine Dimensions & Installation Drawing



## Mold Installation Dimensions Drawing



# Sodick Co., Ltd.

3-12-1, Nakamachidai, Tsuzuki-ku, Yokohama, Kanagawa  
224-8522 Japan  
TEL: 81-45-942-3111 FAX: 81-45-943-7880

<http://www.sodick.jp>

- The export of Sodick's products and its related technologies (including software applications) is regulated under Japan's Foreign Exchange and Foreign Trade Control Law. In addition, because some of these products may be subject to re-export controls under the Export Administration Regulations (EAR) of the United States; please contact Sodick before offering or exporting these products overseas.
- This catalogue contains a photographic image that has been generated from 3DCG.
- Due to ongoing research, specifications are subject to change without prior notice.
- The contents of this catalog is current as of August, 2015.